



# Antennas

For use with JANUS® Readers

Kapsch TrafficCom is a leading and experienced global provider of high-performance intelligent transportation systems. With its end-to-end portfolio, Kapsch offers solutions across its customer's entire value chain — from single products and components, to fully integrated turnkey systems and solutions in the applications of electronic toll collection, commercial vehicle operations and highway traffic management. Kapsch 915 MHz products and components offer an open, modular and flexible design, allowing our customers to meet individual market demand.

# Antennas

Kapsch antennas are designed for high performance in both lane-based and AET collection environments, allowing agencies to select from a diverse array of implementation options. Since 1993, Kapsch has provided this tried and true technology to agencies throughout North America.

## Specifications

Model	Antenna #	Dimensions W x H x D" (inches)	Weight <sup>2</sup>	Beam Width (° deg.)		Gain	Mounting <sup>3</sup>
				Horizontal	Vertical		
IAG-1 <sup>1</sup>	800260-011	34.8 x 31.8 x 2.2"	28 lbs.	28°	28°	16 dBi	Horizontal
IAG-1 "B" <sup>1</sup>	800260-012	34.8 x 31.8 x 2.2"	28 lbs.	28°	28°	16 dBi	Horizontal
IAG-2 <sup>1</sup>	800260-008	17.7 x 15.5 x 1.2"	4 lbs.	42°	47°	12 dBi	Horizontal
IAG-2T <sup>1, 6</sup>	800260-007	17.7 x 15.5 x 1.2"	4 lbs.	40°	40°	12 dBi	Horizontal
IAG-3	800260-015	34.5 x 21.3 x 3.1"	19 lbs.	29°	40°	14 dBi	Horizontal
VRC	800260-010	17.2 x 10.2 x 1.1"	4 lbs.	60°	40°	10 dBi	Vertical
Patch - Toll Booth <sup>4</sup>	700257-001	8.8 x 7.4 x 6.1"	1.3 lbs.	N/A	N/A		Horizontal
Patch - Toll Booth <sup>5</sup>	700257-002	10.8 x 7.4 x 4.1"	3.7 lbs.	N/A	N/A		Horizontal
Patch - Lab Use	700257-003	7.8 x 4.6 x 2.3"	3.4 lbs.	N/A	N/A		Horizontal

**Notes:**

- <sup>1</sup> See drawings for the different mounting options for IAG-1 vs. IAG-1 "B", and IAG-2 vs. IAG-2T.
  - <sup>2</sup> Weight specified is applicable to the antenna structure only. (i.e. does not include the mounting hardware.)
  - <sup>3</sup> Mounting information is provided as a guideline. Site details may require some adjustments beyond the ranges specified.
  - <sup>4</sup> Includes a switch that is wired discretely.
  - <sup>5</sup> Includes a switch that disables the antenna directly.
  - <sup>6</sup> Includes electronic elevation tilt of 15°.
- Other antenna's may be available for unique or rare applications. Contact Sales for more information.

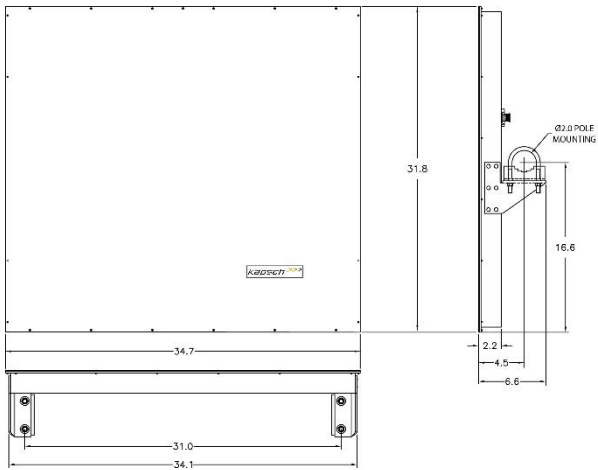
## Mounting Heights

Application	Std. Lane Width	Wide Lane Width	Tri-Protocol (TDM/6C/SeGo)	TDM Only	IAG-1 800260-011 Tilt Angle: 15°	IAG-1 "B" 800260-012 Tilt Angle: 15°	IAG-2 800260-008 Tilt Angle: 10°	IAG-2T 800260-007 Tilt Angle: 0°	IAG-3 800260-015 Tilt Angle: 10°	VRC 800260-010 Tilt Angle: See below
ORT Lanes	x	-	x	-	-	-	-	-	16' to 19'	-
	x	-	-	x	14' to 17'	14' to 17'	14' to 16'	14' to 16'	16' to 19'	-
Plaza Lanes (< 50 mph or 80 kmh)	x	-	x	-	14' to 17'	14' to 17'	9' to 16'	-	14' to 19'	-
	x	-	-	x	14' to 17'	14' to 17'	9' to 16'	9' to 16'	14' to 19'	-
	-	x	x	x	-	-	14' to 16'	14' to 16'	-	-
Traffic Mgmt. (Overhead Mount)	x	x	x	x	-	-	-	-	-	17' to 20' @ 5° Tilt
Traffic Mgmt. (Side Fire)	x	x	x	x	-	-	-	-	-	17'±1' @ 30° Tilt or 45° yaw

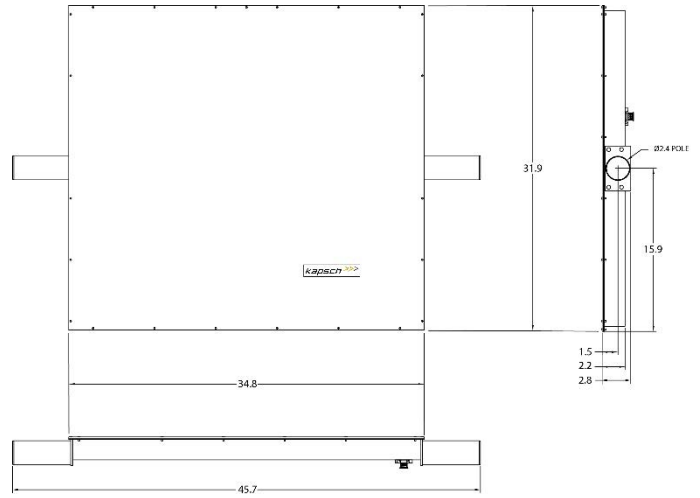
\*Cable Loss Restrictions Apply

# Drawings and Dimensions

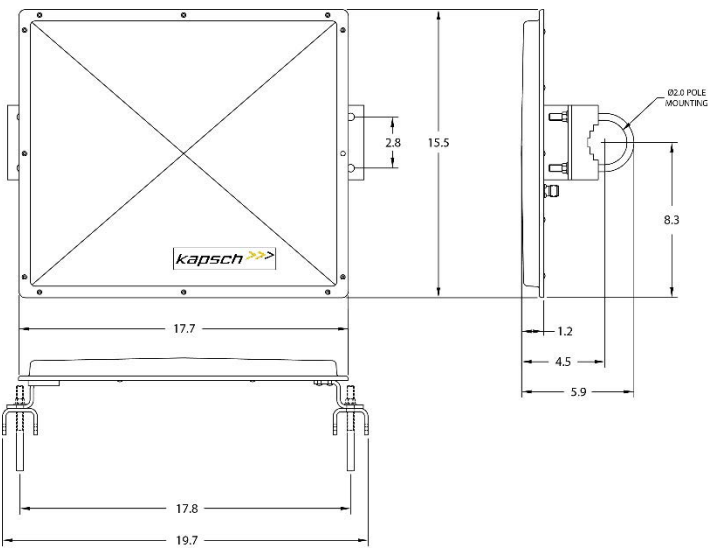
**IAG-1**



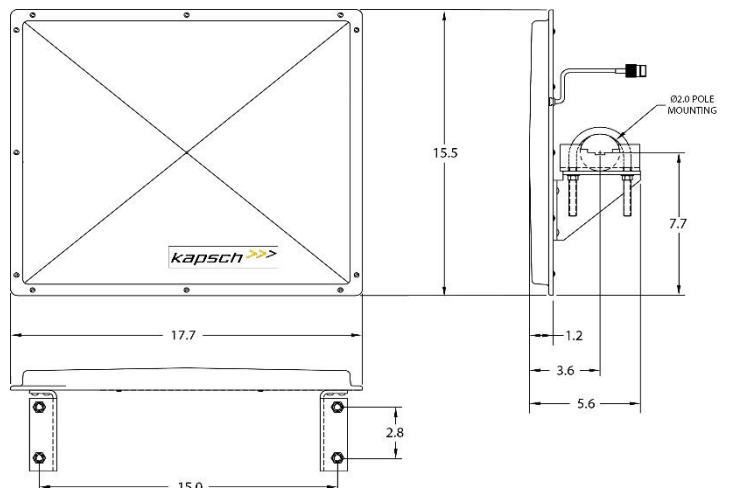
**IAG-1 "B"**



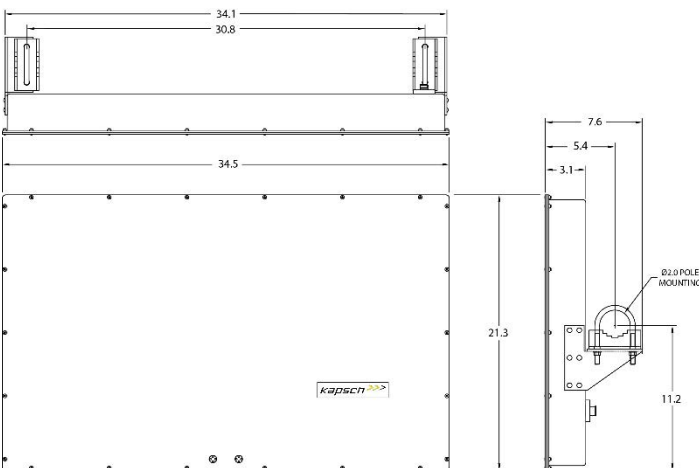
**IAG-2**



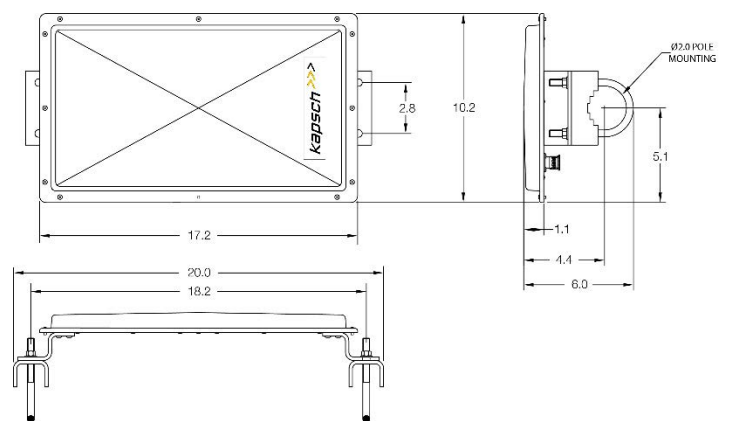
**IAG-2T**



**IAG-3**



**VRC**



### **Kapsch TrafficCom**

Kapsch TrafficCom is a globally renowned provider of transportation solutions for sustainable mobility with successful projects in more than 50 countries. Innovative solutions in the application fields of tolling, tolling services, traffic management and demand management contribute to a healthy world without congestion.

With one-stop-shop solutions, the company covers the entire value chain of customers, from components to design and implementation to the operation of systems.

Kapsch TrafficCom, headquartered in Vienna, has subsidiaries and branches in more than 25 countries and is listed in the Prime Market segment of the Vienna Stock Exchange (ticker symbol: KTCG). In its 2022/23 financial year, about 4,000 employees generated revenues of EUR 553 million.

**>>> [www.kapsch.net](http://www.kapsch.net)**

*Content subject to change without notice.*